



Neighborhood News



May 2024

Experience Bellevue!

Saturday May 4, May 18 and June 1
Last chance to register for May 4 tours!

The event features a variety of two-hour tours and experiences each week. You can attend one, two or all three Saturday mornings. Some tours are offered in Mandarin or Spanish.

For full tour descriptions and to register, visit


May 4: [experiencebellevuemay4.eventbrite.com](https://www.eventbrite.com/e/experience-bellevue-may-4-tours)

May 18: [experiencebellevuemay18.eventbrite.com](https://www.eventbrite.com/e/experience-bellevue-may-18-tours)

June 1: [experiencebellevuejune1.eventbrite.com](https://www.eventbrite.com/e/experience-bellevue-june-1-tours)

For more information, contact neighborhoodoutreach@bellevuewa.gov or call 425-452-6836.



 For alternate formats, interpreters, or reasonable modification requests please phone at least 48 hours in advance 425-452-2735 (voice) or email mheilman@bellevuewa.gov. For complaints regarding modifications, contact the City of Bellevue ADA, Title VI, and Equal Opportunity Officer at ADATitleVI@bellevuewa.gov.

Subscribe to Neighborhood News electronically:
[BellevueWA.gov/neighborhood-news](https://www.bellevuewa.gov/neighborhood-news)

Mini City Hall moves to new space!

Wednesday, May 15, 11 a.m.-noon
Crossroads Shopping Center
15600 NE 8th St, Suite E1, near Hallmark store

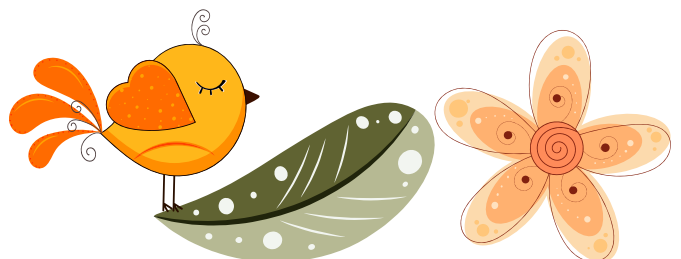
Mini City Hall is moving to a new, larger space at Crossroads Shopping Center to meet increasing demand for services.

The new facility builds on our 30 years of serving the needs of Bellevue's residents and building partnerships with well-known community organizations to provide direct services including healthcare, computer skill building, immigration support, job counseling, housing and more.

Join us for a grand opening celebration!

Celebrate the new Mini City Hall and our commitment to building a stronger, more connected community for generations to come. Free food and drinks will be provided, and a reservation is highly encouraged, and the first 50 people who make a reservation will get a surprise gift at the event. There will also be a resource fair featuring local nonprofits and community organizations.

To let us know that you are planning to attend, this event, please call 425-452-2800 or email MiniCH@bellevuewa.gov. For more information about Mini City Hall, please visit our website: [BellevueWA.gov/mini-city-hall](https://www.bellevuewa.gov/mini-city-hall).



Neighborhood Enhancement Program updates

Northeast Bellevue. NEP kicked off in early April with a budget of \$366,000 for your area! Now is the time to submit your project ideas for how you'd like this money spent.

It's easy to share your ideas. Simply return the Postage Paid Project Idea Card each Northeast Bellevue household received in the mail or submit your ideas using the online submission form found at BellevueWA.gov/nep. All project ideas must be postmarked or submitted online by May 7.

West Lake Sammamish. City staff have finished the scoping phase of the numerous project ideas that were submitted for your neighborhood earlier this year.

Please plan to join city staff and your neighbors at a public open house on June 13, 6:30-8 p.m. to preview the projects that will be included on your NEP ballot and are eligible for potential funding from the \$219,000 budget allocation. A brief overview of the project scoping process and NEP voting process will be provided.

Look for printed invitations and meeting details to arrive in West Lake Sammamish area mailboxes in early June. Let us know that you plan to attend by emailing NeighborhoodOutreach@bellevuewa.gov.

The Neighborhood Enhancement Program is a city-funded program that allows residents to propose and select modest, capital projects to enhance their neighborhoods. The program rotates through the city's 14 NEP neighborhood areas over the course of seven years, serving two areas each year. The \$7 million program allocation is distributed among each of the NEP neighborhood areas, according to the number of households in each area.

Please contact Theresa Cuthill at tcuthill@BellevueWA.gov with questions. Detailed program information can be found at BellevueWA.gov/nep



Save the date for the Grand Connection Crossing Open House!

Thursday, May 2, 5-8 p.m.

Bellevue Botanical Gardens – Aaron Education Center, 12001 Main Street, Bellevue

Join us for light refreshments and a first look at the design options for the Grand Connection Crossing. Stop by to learn how the city will evaluate locations for the crossing and share what features you would like to experience while using the bridge.

About the project

The Grand Connection Crossing will provide a safe and convenient alternative to vehicle travel, and will improve access from downtown to Wilburton, local trails and regional transportation options.

The crossing is a key component of the Grand Connection program, which will create inviting spaces between Meydenbauer Bay and Eastrail where people who live, work or play in Bellevue can come together to gather, shop and dine.

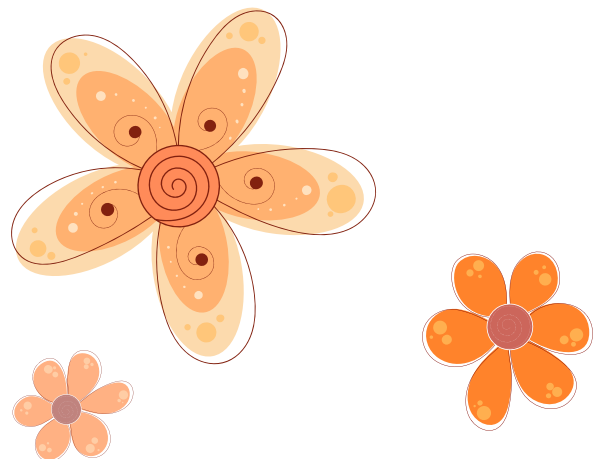
Old Bellevue Spring Wine Walk is scheduled for May 9!

Join us in Old Bellevue for the annual Spring Wine Walk on Thursday, May 9, 4-8 p.m.

Sip delicious vintages from 18 wineries that have partnered with merchants to provide excellent wines in our unique location in the heart of Old Bellevue.

To participate, register at bit.ly/OBWW

General tickets: \$40 (5:30-8 p.m.)





Bridle Trails Valley Creek Park Grand Opening

Join us for the grand opening of Bellevue's newest park located at 4432 140th Ave. NE on Saturday, May 11, 11 a.m.-1 p.m.

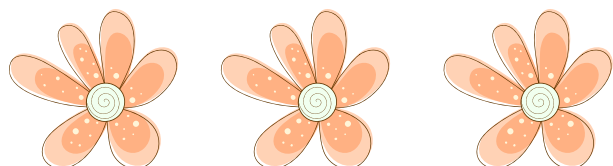
Festivities include a warm welcome and ribbon cutting starting at 11 a.m. followed by snacks and beverages, plus food and games.

Enjoy new park elements, including:

- Adventure play areas for ages 2-5 and 5-12
- Picnic shelter with tables
- Benches
- Hard and soft-surface paths
- Open lawn area
- Bathroom
- 12-stall parking lot (one ADA spot)
- Loop trail

Please park at North Bellevue Community Center, 4063 148th Ave. NE. An ADA-accessible shuttle with the capacity for one wheelchair plus a retrofitted school bus will provide continuous service starting at 10 a.m.

For alternate formats, interpreters, or reasonable modification requests, please phone at least 48 hours in advance 425-452-4286 (voice) or email cfaine@bellevuewa.gov. For complaints regarding modifications, contact the City of Bellevue ADA, Title VI, and Equal Opportunity Officer at ADATitleVI@bellevuewa.gov.



BELLEVUE FARMERS MARKET

Bellevue Farmers Market opens May 23!

Thursdays, 3-7 p.m. 1717 Bellevue Way NE

The Bellevue Farmers Market returns on Thursday, May 23 for its 21st year and welcomes you each Thursday, 3-7 p.m.!

The Bellevue Farmers Market is a community nonprofit organization and is pleased to bring you over 40 vendors offering local fruit and vegetables, and foods like honey, baked goods, artisan beverages and much more.

Each weekly event also includes ready-to-eat dining options, free kids' activities, musical performances and Bellevue organizations sharing their work. SNAP, Senior and WIC are accepted. Plenty of free parking is on site.

Learn more at: bellevuefarmersmarket.org



Jubilee in the Community

(Formerly "Day of Sharing and Caring")

Applications and more information:

BellevueWA.gov/jubileeinthecommunity.

Applications are due by May 31 and are available online in English, 简体中文, 繁體中文, 日本語, 한국어, Русский, Español and Tiếng Việt.

Do you love your home but yardwork or outside projects have become too much to manage due to physical or financial hardship?

Jubilee REACH will coordinate a team of volunteers to help homeowners with yard maintenance and/or outside home improvement needs.

Jubilee in the Community can help with a variety of outdoor projects. Some examples include:

- Yard cleanups
- Bark and gravel spreading

Continued on next page

Continued from previous page

- Power washing of driveways, decks or fences
- Fence, gate, shed or deck repair and painting
- Junk hauling
- Big and small projects are possible!

We encourage anyone in need, including economic or other life challenges, to apply. The ideal candidates are long-time residents, fixed or low income, elderly or those with little other means of support.

To qualify, you must own and occupy your house in Bellevue.

This program is free to Bellevue residents. However, some projects require homeowners to assist with minimal material costs.

There are three ways to apply:

- Complete the enclosed application and mail it back or return to City Hall.
- Complete the application online at BellevueWA.gov/jubileeinthecommunity
- Call Sarina Miller at 425-452-4295 for assistance completing the application



Before



After

Bellevue 2044: Comprehensive Plan Milestone: Information Session and Final Draft

By Brooke Brod, Community Engagement Lead, Planning

The public is invited to learn more about the final draft, how community input was used, and what the process for adoption looks like going forward at an **Information Session on Monday, May 6, 6:30-8 p.m.**

On May 1 the planning team will release the final draft of the Comprehensive Plan. This draft reflects over two years of work, input from over 7,000 community members, and a bold vision for addressing growth and development for the next twenty years. A copy of the draft can be downloaded at BellevueWA.gov/comprehensive-plan.

This important milestone will start another round of review prior to a public hearing and a formal recommendation from the Planning Commission later this summer.

This will be a hybrid event and you can either attend in-person at City Hall or by Zoom. For more information or to register please visit: Bellevue-2044-Final-Draft-Info-Session.eventbrite.com.

Community members who are interested in learning more about how community input informed this update can check out the newly released Community Engagement Report (BellevueWA.gov/comp-plan-engagement), which provides a summary of all the engagement that happened over the past two years, what was learned and how input was used.



Next Cultural Conversations “Economic Empowerment: Women Leading in Business.”

Monday, May 20, 6:30-8 p.m.

Lighthouse Center Community Room at
Lake Hills Village

15530 Lake Hills Blvd, Suite 201, Bellevue

Join us to be inspired by the remarkable journeys of Richa Rai, Miwa Leick and Van Pham, who will share their experiences of leadership in their respective industries.

Please email Sarah Ballard to register.

(sballard@bellevuewa.gov)

Bellevue resident, Richa Rai is an expert in entrepreneurship and mentors and coaches professionals globally.

Miwa Leick, a Bellevue native and certified financial advisor, brings her expertise in international business to the discussion.

Van Pham, Bellevue business owner, operates a boutique salon in Downtown Bellevue. She also is a dedicated mother and mentor to aspiring stylists.

This event offers a unique opportunity to gain insights and network, and perhaps start on your own entrepreneurial journey!



Bellevue Essentials is recruiting the class of 2024!

Bellevue Essentials, the city's 12-week civic engagement program will open your eyes to city government and the avenues to get involved. You will experience the daily structure and operations of city government, including the work, the challenges and the collaboration between staff and community that make Bellevue a great place to live, work and play.

Hands-on activities allow you to experience the day-to-day challenges of running a local government. The class is great for those active in



their neighborhood and for those who want to get more involved in the community.

Classes are held on Wednesdays, 5:30-8:30 p.m., Sept. 21- Nov. 20 and include two Saturday morning sessions on Sept. 21 and Oct. 5.

Each session includes some pre-class homework, a

networking dinner, presentations and interactive activities from different city departments. The class of 35 is selected through an application process and is open to those that live or work in Bellevue. Applications are due July 21, by 5 p.m. Tuition is \$200 and fee waivers based on financial need are available on request.

To learn more, visit BellevueWA.gov/bellevue-essentials and view a video introduction to the Bellevue Essentials experience. Attendance at an upcoming information meeting before you apply is encouraged.

Tuesday, June 11, Noon-1 p.m.

Zoom meeting. Link sent upon reservation

Wednesday, June 12, 5:30-6:30 p.m.

Bellevue City Hall, 450 110th Ave NE, Room 1E-108

Tuesday, June 18, 5:30-6:30 p.m.

South Bellevue Community Center,
14509 SE Newport Way

For more information or to reserve a spot for an information meeting, contact Julie Ellenhorn at 425-452-5372 or jellenhorn@bellevuewa.gov.





Be part of the 11th Annual Lake to Lake Bike Ride!

Saturday, June 8

9 a.m.-1 p.m., Ages 9 years and older

12:15-12:45 p.m.

Ages 3-8 years, closed-course bike ride

Robinswood Community Park, North Entrance,
14915 SE 22nd Street

Information and registration are
online: parks.BellevueWA.gov/ride

Explore Bellevue's hidden treasures by bike on the Lake to Lake Bike Ride on Saturday morning, June 8 - rain or shine! Bring the whole family to this enjoyable, non-competitive ride benefiting the City of Bellevue's youth donation fund.

There are three routes: the mostly flat eight-mile Greenbelt Loop, the more challenging 24-mile Lake Loop, or the Kids Ride around Robinswood Park.

All participants will receive a custom-designed event t-shirt and various freebies at the post-event prize giveaway.



Sound Transit and Bellevue collaborate on art exhibit for 2 Line opening

To celebrate the opening of light rail on the Eastside, the City of Bellevue is displaying art from Sound Transit at City Hall that showcases the building of the agency's Link lines 1 and 2.

On display on the second floor during business hours through the fall, the art exhibit "Modeling Motion & Link in Process" highlights the complexity of building a modern transit system.

Photographs are displayed alongside models and work samples of artwork built into Sound Transit stations.



Suggestions for overcoming loneliness

Many people feel lonely, and these are normal feelings. The good news is that there are many ways to connect with people and the effort will help you and others too!

Research indicates that social interaction is a basic human need and can improve your physical health by reducing issues such as cardiovascular problems, blood pressure, depression and anxiety, and may help decrease the risk of dementia or slow its progression.

If you are looking for ways to get out and meet others, here are a few suggestions:

- Look for classes or clubs in your areas of interest, such as painting, games, crafts, music, exercise, and exploring parks. These activities are available through the North Bellevue Community Center.
- Volunteering is also a great way to meet people, share your time and talents, and help others. The City of Bellevue, hospitals, places of worship, community services and RSVP (Retired and Senior Volunteer Program) all welcome support and have multiple ways to become involved. The City of Bellevue provides information on volunteer opportunities BellevueWA.gov/volunteering or you can contact the City of Bellevue 425-452-6800 and ask about volunteering.
- Take care of yourself and help others by reaching out to friends, family, former work colleagues, classmates and peers to have a conversation and maybe get together for coffee or a walk. Share memories and have a laugh!

As we age, it is easy to become isolated, and a call or note can cheer someone up and start the habit of getting up and out to meet new people. Your time and talent are needed in our community!

National Night Out will return to Crossroads Park!

National Night Out (NNO) is back, and it's set to be bigger and better!

Join us on August 6, 4-7 p.m. at Crossroads Park for an evening of community and crime prevention.

This year, the event will bring together neighbors, law enforcement and community leaders with a variety of activities, including food trucks with delicious treats for purchase, engaging games, inspiring speakers and much more.

National Night Out is a vital initiative to strengthen police and community partnerships and a



sense of unity among residents. By promoting neighborhood camaraderie and building relationships with law enforcement, we can work together to create safer, more caring communities where everyone feels valued and supported.

One key aspect of National Night Out is raising awareness about crime prevention strategies. This year we're highlighting Crime Prevention Through Environmental Design (CPTED), a powerful concept that evaluates structures and environments to prevent crime and enhance quality of life.

National Night Out is part of our commitment to building safer and stronger communities.

We look forward to seeing you there!

Celebrating Dedication: Police volunteer is honored

Susan Allen, a long-time Bellevue resident and police volunteer, bids farewell to her remarkable time with the Bellevue Police Department. Susan is retiring from the volunteer program and moving out of state to be closer to her family.

Susan's service to the Bellevue Police Department started before the formal beginning of the volunteer program in 1994!

As far back as the 1980s, Susan championed causes close to her heart, notably her involvement

with Mothers Against Drunk Driving. Over the years, Susan has been involved with a number of volunteer roles, including supporting community events at the Crossroads Community Station and actively participating in National Night Out gatherings, Drug Take Back Events and Safety Fairs.

Beyond her invaluable contributions as a volunteer, Susan has also served as the Executive Director for the Bellevue Police Foundation. She



Continued on next page

Continued from previous page

has also served in neighborhood associations, school traffic safety programs and other community-based initiatives.

Because of her dedication, Susan has received numerous accolades, including the prestigious President's Silver Volunteer Service award. This honor, bestowed upon her two years in a row, reflects her unwavering commitment. Susan is an example of the profound impact that one individual can make in shaping our community.

For more information about the Bellevue Police volunteer program, please visit: [BellevueWA.gov/city-government/departments/police/about-police/police-jobs/volunteer](https://www.bellevuewa.gov/city-government/departments/police/about-police/police-jobs/volunteer)

Interested in sustainable travel options and making the best use of our transportation system?

The city is updating the Transportation Demand Management Plan for 2024-2033, and we want to hear from you!

Your input will help the city make it easier for people who live and work in Bellevue get around more efficiently, affordably and sustainably. Please visit the TDM Plan Update Engaging Bellevue website at [EngagingBellevue.com/tdm-plan-update](https://www.EngagingBellevue.com/tdm-plan-update) to learn more and provide feedback on the plan by May 15.

The City of Bellevue's Transportation Demand Management (TDM) Program aims to expand the use of non-drive-alone modes, such as transit, carpool, vanpool, walking, biking and flexible work schedules or telecommuting. Expanding use of these modes and reducing solo driving is important for making the best use of our transportation system and reducing greenhouse gas emissions.

Bellevue TDM offers travel and commute information and assistance through the [ChooseYourWayBellevue.org](https://www.ChooseYourWayBellevue.org) website and the Choose Your Way Bellevue app, available on the Apple App Store and Google Play.

Celebrate Bike Everywhere Month with Choose Your Way Bellevue!

May is Bike Everywhere Month, and Choose Your Way Bellevue invites you to celebrate with us.

Choose Your Way Bellevue is the City of Bellevue's Transportation Demand Management (TDM) Program, that provides information and resources to Bellevue workers, residents, and students encouraging the use of alternatives to driving alone, including riding the bus, carpooling, vanpooling, biking, walking and teleworking.

Either jump on your trusty bike or dust off your unused bike and check out [ChooseYourWayBellevue.org/bike](https://www.ChooseYourWayBellevue.org/bike) for the Bellevue Bike Map, safe bicycling tips, and information on how to earn gift cards and other rewards for biking.

There are several events to celebrate Bike Everywhere Month:

- Three Bike Everywhere Month stations in and around Bellevue in partnership with the City of Kirkland and Cascade Bicycle Club, starting at 7 a.m. on May 17.
- Introduction to bike commuting class and a bike maintenance class, 1-3:15 p.m., May 18 at Lake Hills Library.
- We'll be handing out gift cards to people biking on May 29 at designated locations near the Bellevue Transit Center.

Check out [ChooseYourWayBellevue.org/bike#bike-month](https://www.ChooseYourWayBellevue.org/bike#bike-month) for details, locations and additional events. And remember to log your bike trips and other sustainable mode trips, at [ChooseYourWayBellevue.org/rewards](https://www.ChooseYourWayBellevue.org/rewards) to earn gift cards and other rewards.

See you on the bike paths!



JOIN US FOR OUR
BELLEVUE MINI CITY HALL 30TH ANNIVERSARY

Grand Opening

Free food, fun, music and community resource fair!

★ Free \$25 Orca card! ★



Wednesday, May 15, 2024



Starts at 11 a.m.



Crossroads Mall

15600 NE 8th St Ste E1, Bellevue, WA 98008
(South entrance inside the mall near Hallmark)



First 50 people
to RSVP will
receive a
special gift

RSVP: 425-452-2800 | minich@bellevuewa.gov

Boards and Commissions Meetings

Stay updated on meetings and cancellations:
BellevueWA.gov

All meetings are conducted at City Hall unless otherwise noted. Agendas are subject to change. If a holiday occurs on a Monday, please check the updated calendar. Agendas can be downloaded from the city's web pages listed below. Meeting alerts are available through subscribing to the City's Special Meeting Notices page.
BellevueWA.gov/special-meetings

Bellevue Diversity Advisory Network
 (6 p.m., Bellevue City Hall) Last Tuesday of each month
BellevueWA.gov/city-government/bdan

Arts Commission (4:30 p.m., 1E-113)
 First Wednesday of each month
BellevueWA.gov/arts-commission

Environmental Services Commission
 (6:30 p.m., 1E-113) First Thursday of each month
BellevueWA.gov/environmental-commission

Planning Commission (6:30 p.m., 1E-113)
 Second and fourth Wednesday of each month
BellevueWA.gov/cdplanning-commission

Transportation Commission
 (6:30 p.m., 1E-113) Second Thursday of each month with fourth Thursday as needed.
BellevueWA.gov/planning/transportation-commission

Human Services Commission (6 p.m., 1E-113)
 First and third Tuesday of each month
BellevueWA.gov/human-services-commission

City Council Bellevue.Legistar.com/Calendar.aspx

Day	Scheduled Meeting(s)	Location	Public Comment Opportunity
First four Tuesdays of each Month, except August and December	6 p.m. Regular Meeting	Council Chamber Bellevue TV channel 21 and BTB YouTube channel youtube.com/user/BellevueWashington	Emails to Council are accepted at council@bellevuewa.gov at any time. Further opportunities for public comment are published on each Council agenda and can be found at bellevue.legistar.com/calendar.aspx
August – first Tuesday only			
December – first and second Tuesday only			

LEOFF 1 Disability Board (6 p.m., Room 1E-118)
 First Wednesday of each month
BellevueWA.gov/leoff-1-disability-board

Library Board (5p.m., Lake Hills, Bellevue or Newport Way Library) Third Tuesday of each month
BellevueWA.gov/library-board

Parks & Community Services Board
 (6 p.m., 1E-113) Second Tuesday of each month
BellevueWA.gov/pcs-services-board

The Bellevue Network on Aging (BNOA) 8:30 a.m., North Bellevue Community Center 4063 148th Ave NE, Bellevue) First Thursday of each month
BellevueWA.gov/bnoa

Special Events Committee (8:30 a.m., 1E-112)
 Second Thursday of each month
BellevueWA.gov/events

Youth Link Board (6 p.m., 1E-120)
 Second and fourth Wednesday of each month
BellevueWA.gov/youth-link-board

Bellevue's Neighborhood Services Division offers a variety of programs and partnerships for residents and community members.

To learn more about involvement opportunities and programs to enhance neighborhoods, please visit our website at: BellevueWA.gov/neighborhoods or call 425-452-6836 or email: neighborhoodoutreach@bellevuewa.gov.

To subscribe to this newsletter, visit: BellevueWA.gov/neighborhood-news